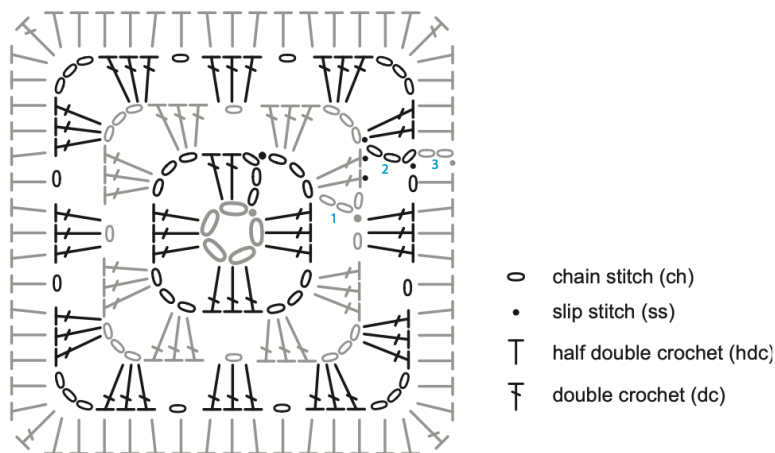


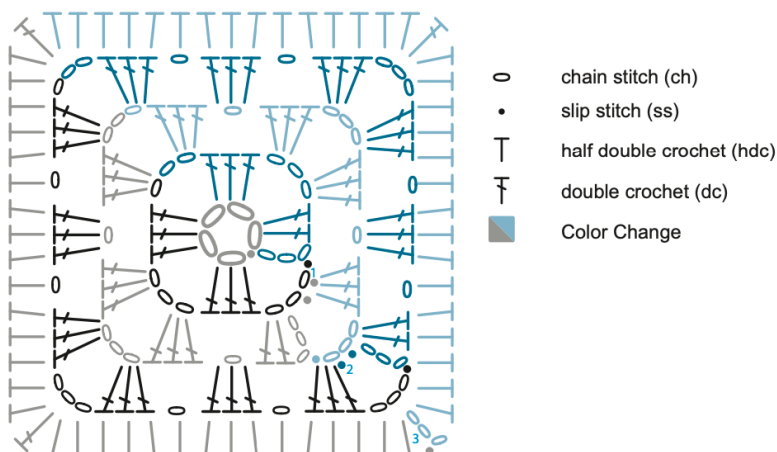
## Indigo Dreams Errata - US Terms

At Janie Crow we try hard to create well written patterns and we spend a lot of time making sure that things are right! Unfortunately, every now and again, a few errors slip through the net and patterns end up with mistakes. We apologise for any inconvenience these may have caused.

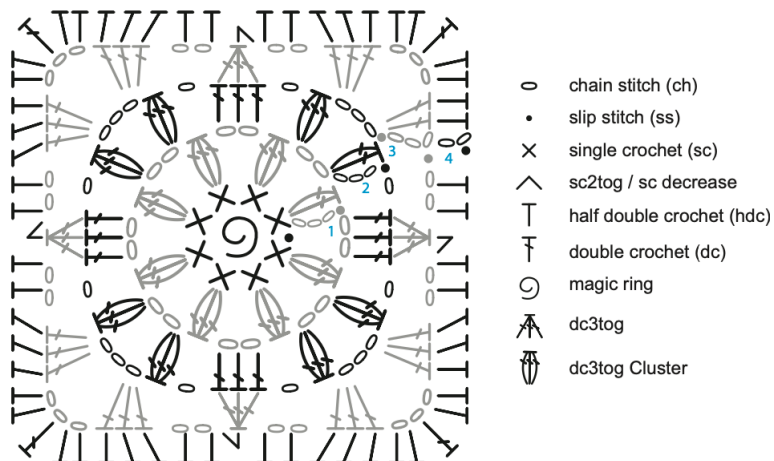
**Page 6:** Updated chart with corrected key:



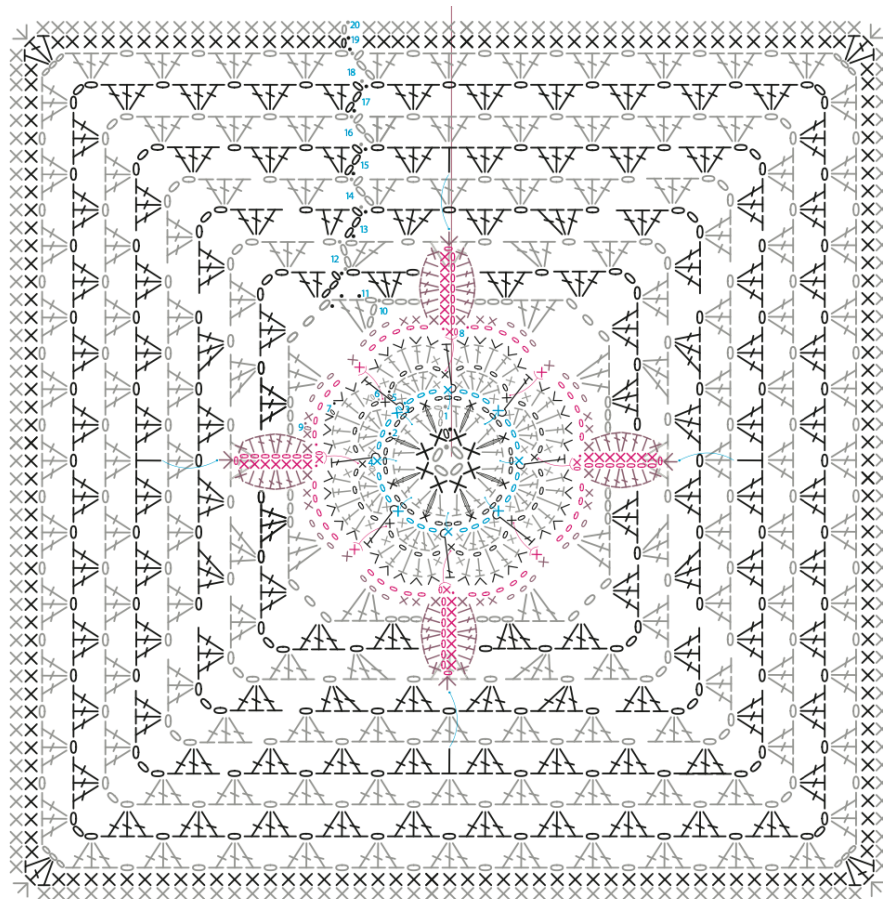
**Page 7:** Updated chart with corrected key:



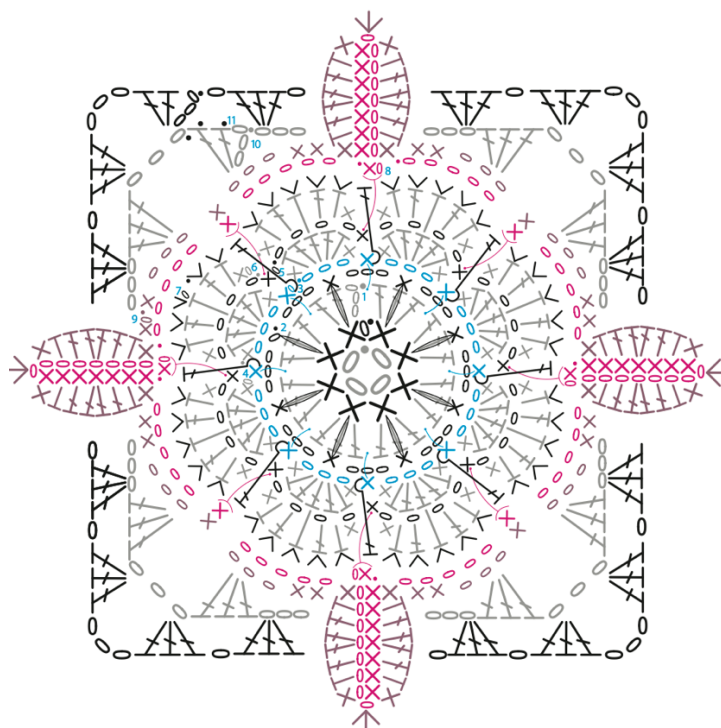
**Page 8:** Updated chart with corrected key:



**Page 9:** Updated chart with corrected key:



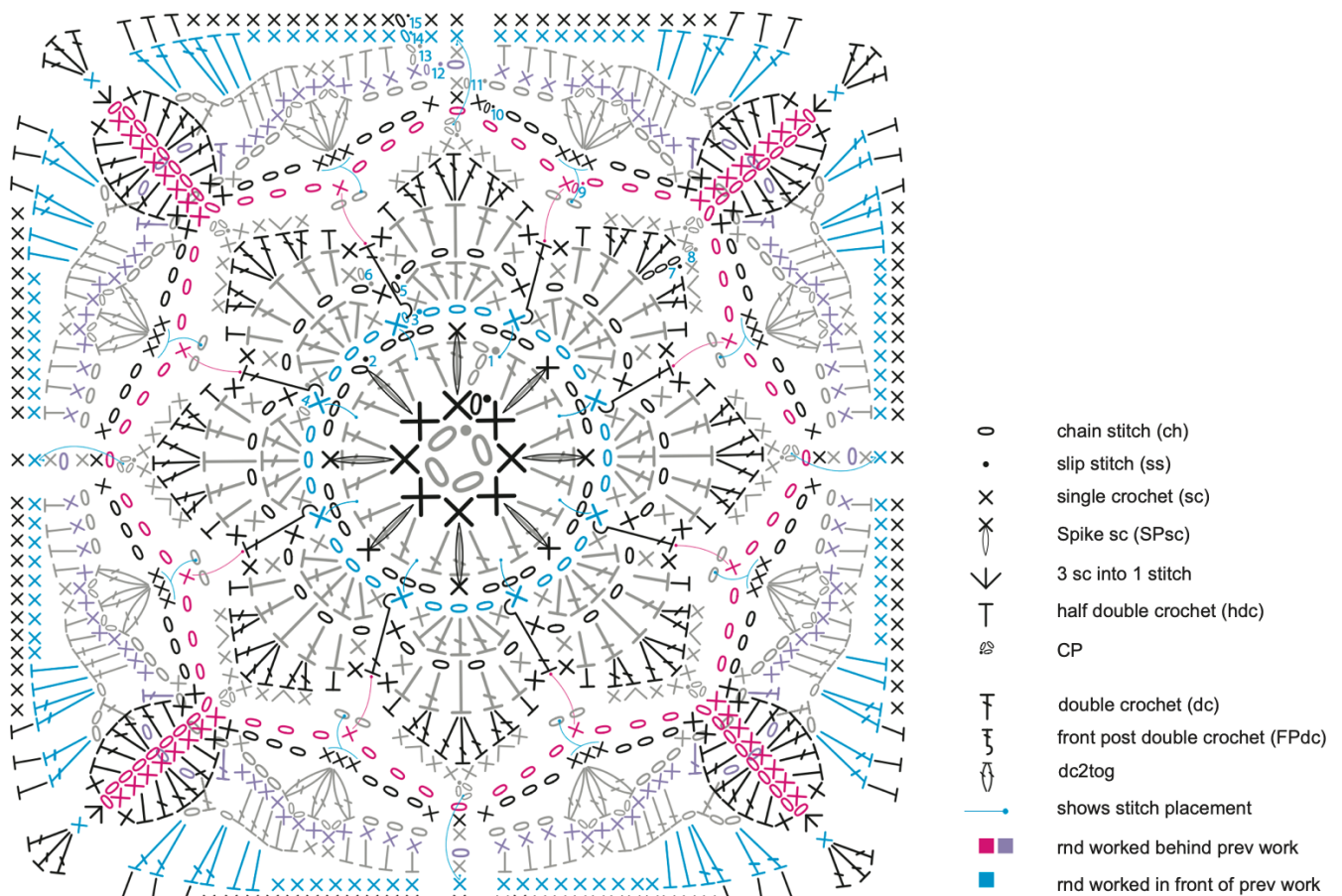
- o chain stitch (ch)
- slip stitch (ss)
- x single crochet (sc)
- x sc Spike st
- ∨ 2 sc in 1 stitch (2sc / inc)
- ∨ 3 sc in 1 stitch (3sc)
- T half double crochet (hdr)
- T double crochet (dc)
- T front post double crochet (FPdc)
- shows stitch placement
- rnd worked behind of prev work
- rnd worked in front of prev work



**Page 10:**

**Round 4:** Should read as follows....[1sc, 1hdr, 3dc, 1hdr, 1sc] into the same ch-sp [1sc, 1hdr, 3dc, 1hdr, 1sc].....

**Round 8** towards end of round it should read '...omitting **1sc** on final pattern repeat,' not 5ch.



Page 14: Round 7 Use **Cardinal** not **Avocado** when joining in yarn.

Round 9: you will work into **Cardinal** on Round 7, not **Avocado**.

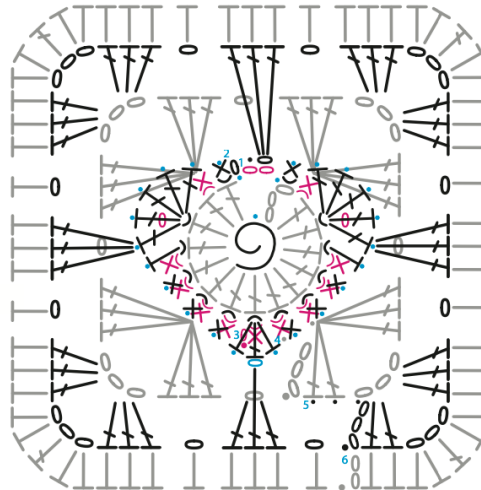
Page 15: Round 10 is written in UK terms by mistake. It should read as follows:

Using **Fern (Avocado)** join yarn into 7ch-sp behind any petal by working 1ch (does not count as a st), 3sc into same ch-sp, \* 3ch, 3sc into 2ch-sp made on Round 8 (**Cranberry**) (**Blush**) between next 2 petals, 3ch, working along remaining side of foundation ch on next leaf stem 1sc into each next 2sts, 1hdc into next st, 1dc into next st, 2dc into next st, 1dc into next st, 1hdc into next st, 1sc into next st, 3sc into skipped ch at top of leaf stem, working along next side of leaf stem 1sc into next st, 1hdc into next st, 1dc into next st, 2dc into next st, 1dc into next st, 1hdc into next st, 1sc into each next 2sts, 3ch, 3sc into 2ch-sp made on Round 8 (**Cranberry**) (**Blush**) between next 2 petals, 3ch, 3sc into next 7ch-sp made on previous round; repeat from \* to end omitting 3sc on final pattern repeat, ss to join, fasten off. (120sts, 16 ch-sps - 4 leaves made)

Round 14 There are 2 asterisks missing towards the end of the instructions. It should read as follows: ....\*\* 1sc into each next 9sts; repeat from \* to end finishing last repeat at \*\*, 1sc into next st, ss to join. (124sts)

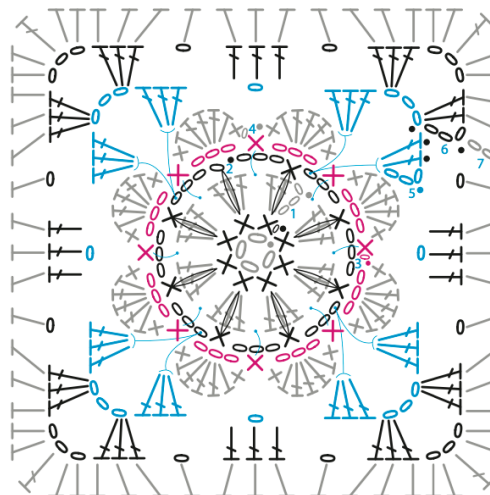
**Page 18:** Chart with corrected key:

- chain stitch (ch)
- slip stitch (ss)
- × single crochet (sc)
- ⤴ back loop
- ⤵ front loop
- ┐ half double crochet (hdc)
- ┘ double crochet (dc)
- ⊙ magic loop
- round worked behind prev work
- top slip stitch round



**Page 19:** Updated chart with corrected key:

- chain stitch (ch)
- slip stitch (ss)
- × single crochet (sc)
- ⤴ Spike sc (SPsc)
- ┐ half double crochet (hdc)
- ┘ double crochet (dc)
- shows stitch placement
- rnd worked in front of prev work
- rnd worked behind prev work



**Page 21: Border Round 1 & Round 2** Stitch count should be 904sts not 908, which means you count 225sts between markers not 226 as stated.

**Round 3:** Stitch count should be 912sts not 916, which means you count 227sts between markers not 228 as stated.

**Page 22: Round 6** The asterisk is in the wrong place. It should read as follows on line 4:  
....same st, \* 1sc into each next 2sts, 1hdc into next st...

**Round 10:** End of central column. Should read 'Place stitch marker into central sc of each 3sc group....'

**Round 11** is written in UK terms by mistake. It should read as follows:

Using **Cascade (Ecrú)** and **US 7 hook** join yarn into st before any marked corner st by working 1ch (does not count as a st), 1sc into same st, \* 2ch, skip next marked st, leave st marker in place, [1sc into next st, 1ch, skip next st] to st before next marked st, 1sc into next st; repeat from \* twice, 2ch, skip next marked st, leave st marker in place, [1sc into next st, 1ch, skip next st] to end, ss to join, fasten off.

**(484sts & 484 ch-sps)**