

# Border Patterns



 UK TERMINOLOGY



By endeavouring to do well, we gain in various ways.  
Let us make the most of the progress we have  
made and strive to do better still.

William Morris

JANIE CROW



Putting the crochet motifs together to create a blanket and then adding an edging to make a lovely frame is one of my favourite parts of a crochet project. I really enjoy the joining process and seeing the results of my hard work coming together to create a beautiful heirloom piece. I am aware that I am a bit unusual in my love of the making up process, but I hope that after months of hard work you will also embrace the process and enjoy these last few steps in your Spirit of Flora journey.

I created two main blankets - one made using the motifs grouped in sets of four and the other laid out in a more random way. Both these blankets are a rectangular shape. I have also designed a square version that uses fewer blocks. You can find diagrams showing my layouts in the Finishing and Blocking free download document on the Janie Crow website. Once you have joined your motifs you can choose to add one of the three border designs I have created. You can opt to have a plain border, one which creates a simple tile effect or one that is a more complicated floral version that echoes William De Morgan's edging tiles that he created as borders for his fabulous tile designs.

Janie  
x

Jane Crowfoot

## MATERIALS

### Stylecraft Life DK

75% Premium Acrylic, 25% Wool  
298m (326yds) per 100g

- Aqua (2357)
- Caramel (2446)
- Cascade (2308)
- Copper (2312)
- Cranberry (2319)
- French Blue (2447)
- Olive (2302)
- Parchment (2445)

### Stylecraft ReCreate DK

40% Wool, 30% Acrylic,  
30% Polyester (All Recycled)  
350m (382yds) per 100g

- Avocado (3189)
- Rose (1945)

## EQUIPMENT

- 3.5mm (US E/4), 4mm (US G/6) & 4.5mm (US 7) crochet hooks
- Stitch Markers
- Large Eye Darning Needle

### Crown Picot (CP)

3ch, ss into the st at base of 3ch by working into the front loop of the ch at the top of the dc at the base of 3ch and into the left side of the post of the same st at the same time so that your hook goes under two yarn loops. **(first picot made)**

3ch, ss into the remaining side of the ss made at the base of the first picot, the front loop of the ch at the top of the dc at the base of same picot and into the left side of the post of the same st at the same time so that your hook goes under three yarn loops. **(second picot made)**

3ch, ss into the remaining side of the ss made at the base of the second picot, the remaining side of the ss made at the base of the first picot, the front loop of the ch at the top of the dc at the base of first picot and into the left side of the post of the same st at the same time so that your hook is under three yarn loops. **(third picot made)**

### Fastening off and re-joining yarn

You will achieve a much neater colour change if you complete rounds and fasten off the yarn, rather than joining mid-stitch. When fastening off a yarn at the end of a round, the slip stitch made for the join can look like a stitch when you are working the following round, so make sure you count correctly and do not count the slip stitch as a stitch when working subsequent rounds. Instructions for re-joining yarn are given at the beginning of each round or row.

### Dealing with yarn ends

Sewing in yarn ends as you go along makes the finishing process much easier and means you are less likely to lose stitches or make errors with tension.

### Working slip stitch (ss) at end of rounds

When working slip-stitches (ss) at the end of rounds, work either into the top of the next stitch or into the third ch of the 3ch made at the beginning of the round.

### Hook changes

Please take note of changes in hook size. Changes are marked in **bold**.

## PATTERN NOTES

This pattern is written using UK terminology - use the chart for US equivalents:

UK		US	
Crown Picot	CP	Crown Picot	CP
chain	ch	chain	ch
chain space(s)	ch-sp(s)	chain space(s)	ch-sp(s)
double crochet	dc	single crochet	sc
double crochet 2 together	dc2tog	single crochet 2 together	sc2tog
double treble crochet	dtr	treble crochet	tr
double treble 3 together	dtr3tog	treble 3 together	tr3tog
Front Post	FP	Front Post	FP
half treble crochet	htr	half double crochet	hdc
Right Side	RS	Right Side	RS
slip stitch	ss	slip stitch	ss
treble crochet	tr	double crochet	dc
treble crochet 3 together	tr3tog	double crochet 3 together	dc3tog
Wrong Side	WS	Wrong Side	WS

## INSTRUCTIONS

### Rectangular Tile Edging

**Note:** It is worth checking that you have achieved the correct stitch count on the final round of your motifs before you start to add the edging. Each motif has 30sts between the marked corner stitches and you are going to use the marked stitches too.

The edging is made using a multiple of 9sts between the marked corner sts. If you have created an alternative layout to mine then you will need to do a bit of maths to make sure your stitch count will work.

All rounds on the edging are worked with RS facing except the final round. Look out for the instruction to turn at the end of Round 8.

● **Foundation Round: (RS facing)** Using **Cranberry** and **4mm hook** and starting so that you will be working along a short edge of the blanket first, join yarn into marked corner st by working 1ch (does not count as a st), 3dc into same st, \* 1dc into each next 30sts, 1htr into next st (this is the final st of the first motif), [skip seam, 1htr into next st on next motif (this st has already been used when joining the squares), 1dc into each next 30sts, 1htr into next st] four times, skip seam, 1htr into next st on next motif (this st has already been used when joining the squares), 1dc into each next 30sts, 3dc into next marked st, **(short edge of blanket worked)**

Work as set from \* along the next long blanket edge working the repeat between the brackets [ ] six times instead of four. \*\*

Once two edges of the blanket have been worked repeat from \* to \*\*, ss to join, do not fasten off. **(900sts)**

Place marker into central st of 3dc group at each corner counting 192sts between each one along the two short edges and 256sts between each one on the two long edges.

Change to **3.5mm hook**.

**Round 1:** Using **3.5mm hook** 3ch (counts as 1tr), \* [2tr, 1dtr, 2tr] into next marked st, 1tr



into each st to next marked st; repeat from \* to end, ss to join, fasten off. **(916sts)**

Place marker into central st of 5tr group at each corner counting 196sts between each one along the two short edges and 260sts between each one on the two long edges.

Change to **4mm hook**.

● **Round 2:** Using **Aqua** and **4mm hook** join yarn into any marked st by working 1ch (does not count as a st), 3dc into same st, \* 1dc into each st to next marker, 3dc into next marked st; repeat from \* three times, 1dc into each st to end, ss to join, fasten off. **(924sts)**

Place marker into third st of 3dc group at each corner counting 198sts between each one along the two short edges and 262sts between each one on the two long edges.

**Note:** I moved the stitch marker over by one stitch to 'correct' the corner and stop it from becoming biased.

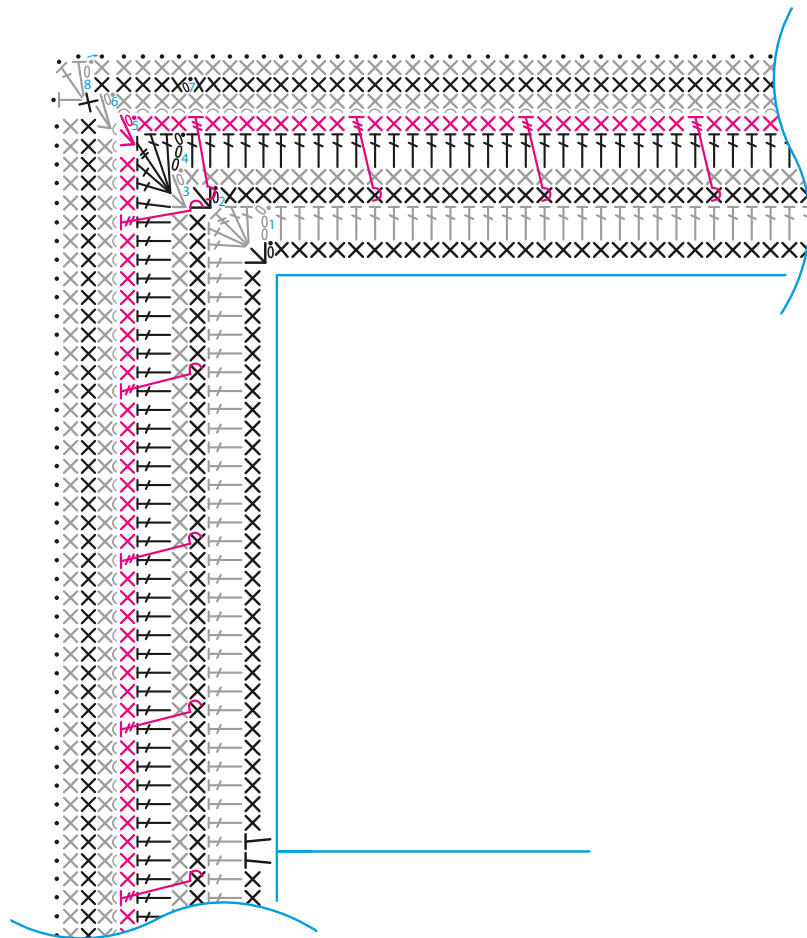
● **Round 3:** Using **French Blue** work as Round 2, do not fasten off. **(932sts)**

Place markers into central st of 3dc group at each corner counting 200sts between each one along the two short edges and 264sts between each one on the two long edges.

Change to **3.5mm hook**.

**Round 4:** Using **3.5mm hook** work as Round 1. **(948sts)**

Place markers into central dtr of 5st group at each corner counting 204sts between each one along the two short edges and 268sts between each one on the two long edges.



- |   |                           |     |                                  |
|---|---------------------------|-----|----------------------------------|
| ○ | chain (ch)                | ⋈   | treble crochet (tr)              |
| • | slip stitch (ss)          | ⋈⋈  | double treble crochet (dtr)      |
| × | double crochet (dc)       | ⋈⋈⋈ | dtr around FP of indicated st    |
| ∨ | 3dc                       | ⋈   | back loop                        |
| ⋈ | half treble crochet (htr) | ■   | rnd worked in front of prev work |

Change to **4mm hook**

● **Round 5:** Using **Cascade** and **4mm hook** and starting so that you will be working along a short edge of the blanket first join yarn into marked st by working 1ch (does not count as a st), 3dc into same st, 1dc into each next 3sts, working in front of previous two rounds 1dtr around back post of third st of 3st group made at corner on Round 2 (Aqua), \* skip next st on previous round (behind dtr), 1dc into each next 8sts, skip 8sts on Round 2, working in front of previous two rounds 1dtr around FP of next

st on Round 2; repeat from \* 21 times, skip next st on previous round (behind dtr), 1dc into each next 3sts, 3dc into next marked st, (**short edge completed**)

1dc into each next 3sts, working in front of previous two rounds 1dtr around back post of third st of 3st group made at corner on Round 2 (Aqua), \* skip next st on previous round (behind dtr), 1dc into each next 8sts, skip 8sts on Round 2, working in front of previous two rounds 1dtr around back post of next st on Round 2; repeat from 28 times, skip next st on previous round (behind

dtr), 1dc into each next 3sts, 3dc into next marked st, (**long edge completed**)

Continue to work as set working along next short edge and then next long edge, ss to join, fasten off. (**956sts**)

Place markers into central st of 3dc group at each corner counting 206sts between each one along the two short edges and 270sts between each one on the two long edges.

● **Round 6:** Using **Olive** join yarn into back loop of any marked st by working 1ch (does not count as a st), 3dc into back loop of same st, \* working into back loop of all sts 1dc into each st to next marked st, 3dc into next marked st; repeat from \* three times, 1dc into each st to end, ss to join, fasten off. (**964sts**)

● **Round 7:** Using **Avocado** join yarn into any st by working 1ch (does not count as a st), 1dc into each st to end, ss to join, fasten off. (**964sts**)

Place markers into st at each corner counting 208sts between each one along the two short edges and 272sts between each one on the two long edges.

● **Round 8:** Using **Caramel** join yarn into any marked st by working 1ch (does not count as a st), [1htr, 1tr, 1htr] into same st, \* 1dc into each st to next marked st, [1htr, 1tr, 1htr] into next marked st; repeat from \* twice, 1dc into each st to end, ss to join, do not fasten off, gently pull hook to make a large loop, remove hook from st, **turn**. (**972sts**)

Change to **4.5mm hook**.

**(WS facing)** Using **4.5mm hook** insert hook into st at base of yarn loop, place yarn loop on the hook and draw through, ss into each st to end, remove hook from final st, cut yarn and pull through to finish.

Sew in yarn ends.

You can find guidance on how to wash and block your finished project in the free download document available via the Janie Crow website.

The striped edging complements this square blanket and balances the complexity of the Spirit of Flora motifs perfectly.

Janie x



## Striped Edging

**Note:** It is worth checking that you have achieved the correct stitch count on the final round of your motifs before you start to add the edging. Each motif has 30sts between the marked corner stitches and you are going to use the marked stitches too.

The stitch count for this edging does not need to be divisible by 9 as for the Rectangular Tile Edging and the Floral Edging.

All rounds on the edging are worked with RS facing except the final round. Look out for the instruction to turn at the end of Round 8.

● **Foundation Round (RS facing):** Using **Caramel** and **4mm hook** work as for Foundation Round of Rectangular Tile Edging, fasten off. **(900sts)**

● **Round 1:** Using **Copper** join yarn into any st between marked corner sts by working 1ch (does not count as a st), 1dc into each st to end (do not increase at corner), ss to join, fasten off. **(900sts)**

Place markers into st in line with central st of 3dc group at each corner on Round 1 (Caramel) counting 192sts between each one along the two short edges and 256sts between each one on the two long edges.

● **Round 2:** Using **Cranberry** join yarn into any marked st by working 1ch (does not count as a st), 3dc into same st, \* 1dc into each st to next marked st, 3dc into next marked st; repeat from \* twice, 1dc into each st to end, ss to join, fasten off. **(908sts)**

Place markers into central st of 3dc group at each corner counting 194sts between each one along the two short edges and 258sts between each one on the two long edges.

● **Round 3:** Using **Aqua** join yarn into any st between marked corner sts by working 1ch (does not count as a st), 1dc into each st to end (do not increase at corner), ss to join, fasten off. **(908sts)**

Place markers into st in line with central st of 3dc group at each corner on Round 2



(Cranberry) counting 194sts between each one along the two short edges and 258sts between each one on the two long edges.

● **Round 4:** Using **Cascade** join yarn into any marked st by working 1ch (does not count as a st), 3dc into same st, \* 1dc into each st to next marked st, 3dc into next marked st; repeat from \* twice, 1dc into each st to end, ss to join, fasten off. **(916sts)**

Place markers into central st of 3dc group at each corner counting 196sts between each one along the two short edges and 260sts between each one on the two long edges.

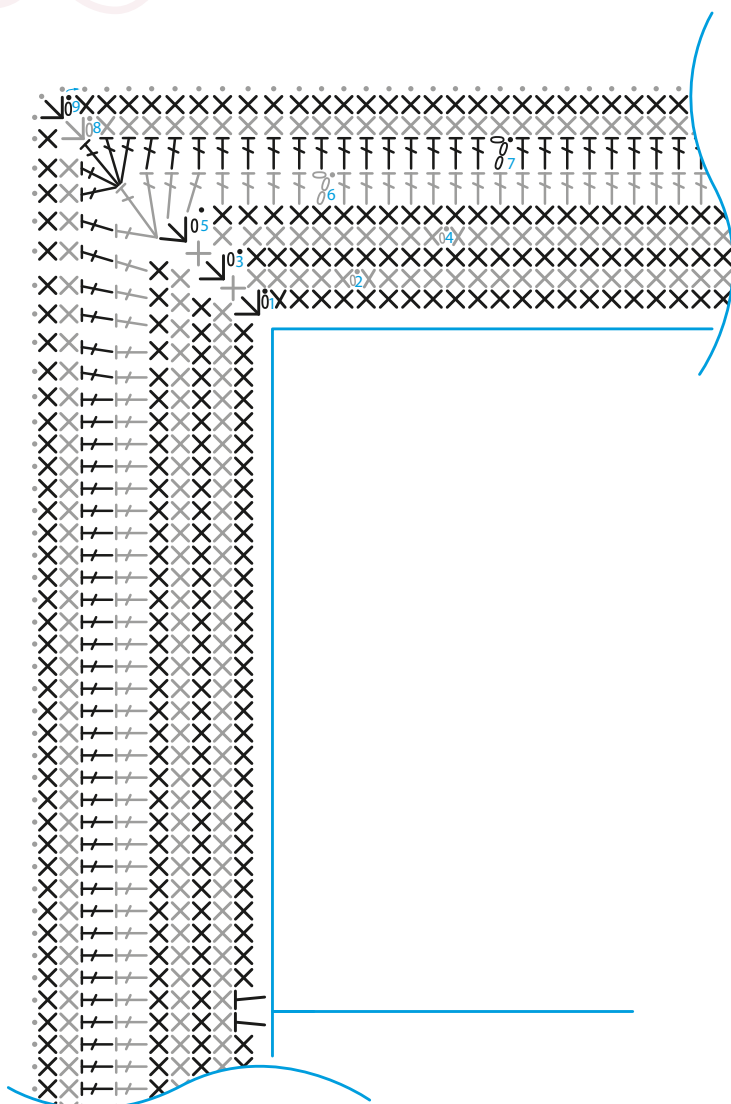
**Note:** I moved the stitch marker over by one stitch to 'correct' the corner and stop it from becoming biased.

Change to **3.5mm hook**.

● **Round 5:** Using **French Blue** and **3.5mm hook** join yarn into any st between marked corner sts by working 1ch + 2ch (counts as 1tr), \* 1tr into each st to next marked st, 3tr into next st; repeat from \* three times, 1tr into each st to end, ss to join, do not fasten off. **(924sts)**

Place markers into central st of 3tr group at each corner counting 198sts between each one along the two short edges and 262sts between each one on the two long edges.

**Round 6:** 3ch (counts as 1tr), \* 1tr into each st to next marked st, 5tr into next marked st; repeat from \* three times, 1tr into each st to end, ss to join, fasten off. **(940sts)**



- chain (ch)
- slip stitch (ss)
- × double crochet (dc)
- ∨ 3dc
- ┆ half treble crochet (htr)
- ┆ treble crochet (tr)

Place markers into central st of 3dc group at each corner counting 202sts between each one along the two short edges and 266sts between each one on the two long edges.

Change to **4mm hook**.

● **Round 7:** Using **Parchment** and **4mm hook** join yarn into any marked st by working 1ch (does not count as a st), 3dc into same st, \* 1dc into each st to next marked st, 3dc into next marked st; repeat from \* twice, 1dc into each st to end, ss to join, fasten off. **(948sts)**

Place markers into central st of 3dc group at each corner counting 204sts between each one along the two short edges and 268sts between each one on the two long edges.

● **Round 8:** Using **Caramel** join yarn into any marked st by working 1ch (does not count as a st), 3dc into same st, \* 1dc into each st to next marked st, 3dc into next marked st; repeat from \* twice, 1dc into each st to end, ss to join, do not fasten off, gently pull hook to make a large loop, remove hook from st, **turn. (956sts)**

Change to **4.5mm hook**.

**(WS facing)** Using **4.5mm hook** insert hook into st at base of yarn loop, place yarn loop on the hook and draw through, ss into each st to end, remove hook from final st, cut yarn and pull through yarn loop to finish.

Sew in yarn ends.

You can find guidance on how to wash and block your finished project in the free download document available via the Janie Crow website.





## Floral Tile Edging

**Note:** It is worth checking that you have achieved the correct st count on the final round of your motifs before you start to add the edging. Each motif has 30sts between the marked corner sts and you are going to use the marked sts too.

The edging is made using a multiple of 9sts between the marked corner sts. If you have created an alternative layout to mine then you will need to do a bit of maths to make sure your stitch count will work.

All rounds on the edging are worked with RS facing.

Work as for Rectangular Tile Edging (on page 4) to end of Round 3.

● **Round 4:** Using **Avocado** and **4mm hook** and working along short edge first join yarn into corner st by working 1ch + 3ch, 2dtr into same st, (counts as dtr3tog) 2ch, [tr3tog into next st, 2ch] twice, skip 2sts, 1dc into each next 2sts, \* 2ch, skip 2sts, [tr3tog into next st, 2ch] twice, tr3tog into next st, 2ch, skip 2sts, 1dc into each next 2sts; repeat from \* 20 times, 2ch, skip 3sts, [tr3tog into next st, 2ch] twice, **(short edge completed)**

dtr3tog into next st, 2ch, [tr3tog into next st, 2ch] twice, skip 3sts, 1dc into each next

2sts, \* 2ch, skip 2sts, [tr3tog into next st, 2ch] twice, tr3tog into next st, 2ch, skip 2sts, 1dc into each next 2sts; repeat from \* 27 times, 2ch, skip 3sts, [tr3tog into next st, 2ch] twice, **(long edge completed)**

dtr3tog into next st, 2ch, [tr3tog into next st, 2ch] twice, skip 2sts, 1dc into each next 2sts, \* 2ch, skip 2sts, [tr3tog into next st, 2ch] twice, tr3tog into next st, 2ch, skip 2sts, 1dc into each next 2sts; repeat from \* 20 times, 2ch, skip 3sts, [tr3tog into next st, 2ch] twice, **(short edge completed)**

dtr3tog into next st, 2ch, [tr3tog into next st, 2ch] twice, skip 3sts, 1dc into each next 2sts, \* 2ch, skip 2sts, [tr3tog into next st, 2ch] twice, tr3tog into next st, 2ch, skip 2sts, 1dc into each next 2sts; repeat from \* 27 times, 2ch, skip 3sts, [tr3tog into next st, 2ch] twice, ss to join.

**(Long edge completed)**

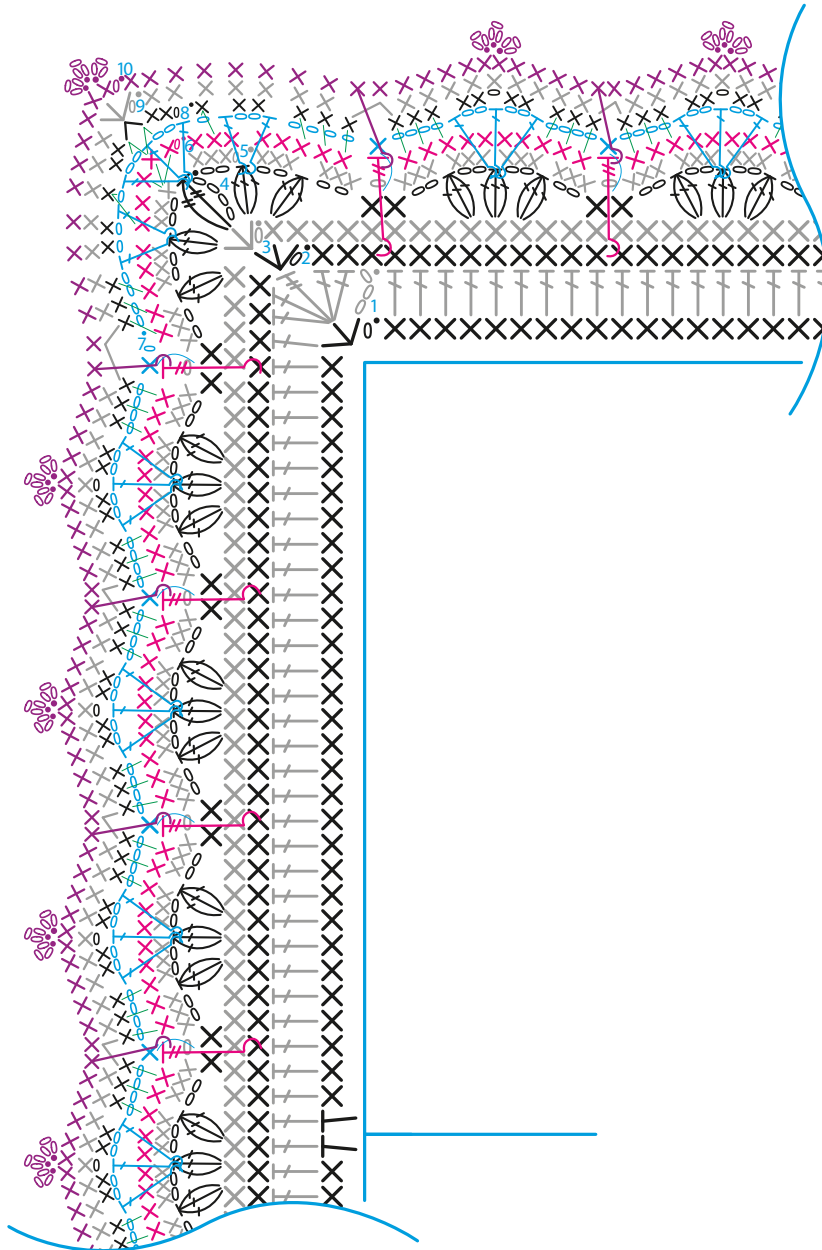
**(98 pattern repeats of 3 cluster groups + 4 groups of 5 clusters at each corner)**

Place a marker into dtr3tog made at each corner counting 21 full pattern repeats of 3 clusters between markers along short edges and 28 along long edges.

● **Round 5:** Using **Cascade** join yarn into ch-sp made before any marked corner st by working 1ch (does not count as a st), 3dc into same ch-sp, 3dc into each next three ch-sps, [1ch, skip next 2dc, 3dc into each next four ch-sps] to end omitting 2 x 3dc on final repeat, ss to join, fasten off.  
**(1244sts & 102 ch-sps)**

Place markers into first st of 3dc group made after all four corner clusters, counting 269sts & 22ch-sps between each one on short edges and 336sts & 29ch-sps between each one on long edges.

● **Round 6:** Using **French Blue** and working along long edge first join yarn into marked st by working 1ch (does not count as a st), 3dc into same st, 1dc into each next 7sts, skip next st, \* working in front of previous two rounds 1dtr around FP of st that sits below/between 2dc made on Round 4 (Avocado) so that you are working into st on Round 3 (French Blue), skip ch-sp made on previous round and next st, 1dc



- |   |                           |       |   |
|---|---------------------------|-------|---|
| ○ | chain (ch)                | ⊕     | tr3tog  |
| • | slip stitch (ss)          | ⊖     | dtr3tog   |
| × | double crochet (dc)       | ⌋ ⌋ ⌋ | dc/tr/dtr around FP of indicated st               |
| ∨ | 3dc                       | ■     | rnd worked in front of prev work                  |
| ∧ | dc2tog                    | ■     | rnd worked behind prev work                       |
| ⌋ | half treble crochet (htr) | —     | shows stitch placement                            |
| ⌋ | treble crochet (tr)       | —     | shows stitch worked through 2 places at same time |
| ⊕ | crown picot (CP)          |       |   |

into each next 10sts, skip next st; repeat from \* 27 times, working in front of previous two rounds 1dtr around FP of st that sits below/between 2dc made on Round 4 (Avocado) so that you are working into st on Round 3 (French Blue), skip ch-sp made on previous round and next st, 1dc into each next 8sts, **(long edge completed)**

3dc into next marked st, 1dc into each next 7sts, skip next st; repeat from \* 20 times, working in front of previous two rounds 1dtr around FP of st that sits below/between 2dc made on Round 4 (Avocado) so that you are working into st on Round 3 (French Blue), skip ch-sp made on previous round and next st, 1dc into each next 8sts, **\*\* (short edge completed)**

Work as set from \* to \*\*, ss to join, fasten off. **(1154sts)**

Place markers into central st of 3dc group at each corner counting 249sts between each one along each short edge and 326sts along each long edge.

● **Round 7:** Using **Rose** and working along short edge first and working behind previous round join yarn into first ch-sp made on Round 5 (Cascade) after any marked corner by working 1ch (does not count as a st), 1dc into same ch-sp, \* 4ch, working in front of previous two rounds [1tr around FP of central cluster of next 3 cluster group, 2ch] twice, 1tr around FP of same cluster, 4ch, working behind previous rounds 1dc into next ch-sp on Round 5 (Cascade); repeat from \* 20 times,

### Make Corner

4ch, skip next cluster made on Round 4 (Avocado), working in front of previous two rounds 1tr around FP of next cluster, 2ch, 1tr around FP of same cluster, 1ch, working in front of previous two rounds [1tr around FP of central cluster of next 3 cluster group, 2ch] twice, 1tr around FP of same cluster, 1ch, working in front of previous two rounds 1tr around FP of next cluster, 2ch, 1tr around FP of same cluster, 4ch, working behind previous rounds 1dc into next ch-sp on Round 5 (Cascade);

## Next Long Edge

Repeat from \* working the repeat 27 times instead of 20 times, \*\*;  
(two side edges completed)

Repeat from \* to \*\* so that four edges are completed, ss to join, fasten off.  
(98 repeats of small flower & 4 corner repeats made)

**Note:** On the next round you will work into ch-sp's made on previous round and into sts made on Round 6 (French Blue).

● **Round 8:** Using **Cascade** and working along short edge first join yarn into ch-sp made before central tr at corner by working 1ch (does not count as a st), 2dc into same ch-sp, \*\* working into marked st on Round 6 (French Blue) at the same time dc2tog over same ch-sp and next ch-sp (this means you draw a yarn through marked st twice), 2dc into same ch-sp, skip 2sts on Round 6 (French Blue), 1dc into next ch-sp and next st on Round 6 (French Blue) at the same time, 2dc into next ch-sp, skip 2sts on Round 6 (French Blue),

\* working so that you do not trap ch made on previous round (Rose) into your sts 1dc into each next 3sts on Round 6 (French Blue), skip next dc, working so that you do not trap ch made on previous round (Rose) into your sts 1dc into each next 3sts, 2dc into next ch-sp, 1ch, 2dc into next ch-sp, skip 4sts on Round 6 (French Blue); repeat from \* 20 times

1dc into each next 3sts on Round 6, (French Blue) skip next dc made on previous round (Rose), 1dc into each next 3sts made on Round 6 (French Blue), 2dc into next ch-sp, skip 3sts made on Round 6 (French Blue), 1dc into next ch-sp and next st on Round 6 (French Blue) at the same time, \*\*\* 2dc into next ch-sp,

## Next Long Edge

Repeat from \*\* working the repeat 27 times instead of 20 times, \*\*; (two edges completed)

Repeat from \*\* to \*\*\* so that four edges are completed, ss to join, fasten off.  
(1048sts & 98ch-sp's)



Place marker into top of dc2tog made at each corner counting 226sts between one on short edges and 296sts between each one on long edges.

**Round 9:** Using **Cranberry** and working along the long edge first join yarn into marked corner st by working 1ch (does not count as a st), 3dc into same st, 1dc into each next 7sts, \* dc2tog over next 2sts, 1dc into each next 4sts, 1dc into next ch-sp, 1dc into each next 4sts; \*\* repeat from \* 27 times, dc2tog over next 2sts, 1dc into each next 7sts, 3dc into next marked st, 1dc into each next 7sts, dc2tog over next 2sts;  
(long edge completed)

## Next Short Edge

Repeat from \* to \*\* working repeat 20 times instead of 27, dc2tog over next 2sts, 1dc into each next 7sts, \*\*\* 3dc into next marked st, 1dc into each next 7sts, dc2tog over next 2sts, (short edge completed)

Work as set from \* so that you have worked along all edges, finishing last repeat at \*\*\*, ss to join, fasten off. (1052sts)

Place marker into each corner st counting 227sts between each one on short edges and 297sts between each one on long edges.

● **Round 10:** Using **Caramel** and working along the short edge first join yarn into any marked corner st by working 1ch (does not

count as a st), 1dc into same st, make CP, 1dc into (same) st at base of CP, 1dc into each next 9sts, \* working in front of previous two rounds 1dc around FP of dtr made on Round 6 (French Blue), 1dc into each next 5sts, make CP, 1dc into (same) st at base of CP, 1dc into each next 5sts; \*\* repeat from \* 20 times,

working in front of previous two rounds 1dc around FP of dtr made on Round 6 (French Blue), 1dc into each next 8sts (last st made into marked corner st), make CP, 1dc into (same) st at base of CP, 1dc into each next 9 sts;

## Next Long Edge

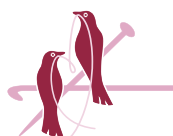
Repeat from \* to \*\* working repeat 27 times instead of 20 times, working in front of previous two rounds 1dc around FP of dtr made on Round 6 (French Blue), 1dc into each next 9sts (last st made into marked st), make CP, 1dc into (same) st at base of CP, 1dc into each next 9sts; \*\*\*

Work as set from \* so that you have worked along all edges, finishing last repeat at \*\*\*, ss to join, fasten off.

(1354sts - 102 CP made)

Sew in yarn ends.

You can find guidance on how to wash and block your finished project in the free download document available via the Janie Crow website.



[www.janiecrow.com](http://www.janiecrow.com)

[mail@janiecrow.co.uk](mailto:mail@janiecrow.co.uk)

**Etsy** [etsy.com/shop/JanieCrowLtd](https://etsy.com/shop/JanieCrowLtd)

**r** [ravelry.com/people/janiecrow](https://ravelry.com/people/janiecrow)

**f** [facebook.com/JanieCrowDesign](https://facebook.com/JanieCrowDesign)

**i** [instagram.com/janiecrow](https://instagram.com/janiecrow)

Photography: Inside Crochet/Leanne Jade • Styling: Claire Montgomerie • Graphic Design: Steph Peat

**crochet**

With Thanks to Inside Crochet Magazine



© Jane Crowfoot 2024. All rights reserved. This pattern and items created from it are for personal use only. Commercial use of either the patterns or the items made from them is strictly prohibited. Please respect the copyright of the design and do not pass it either digitally or otherwise to another person.

